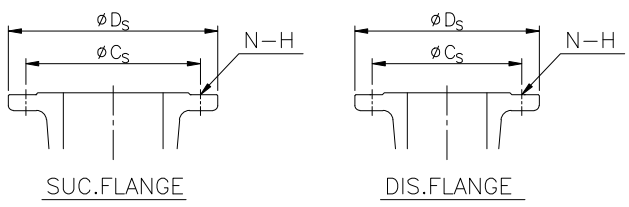
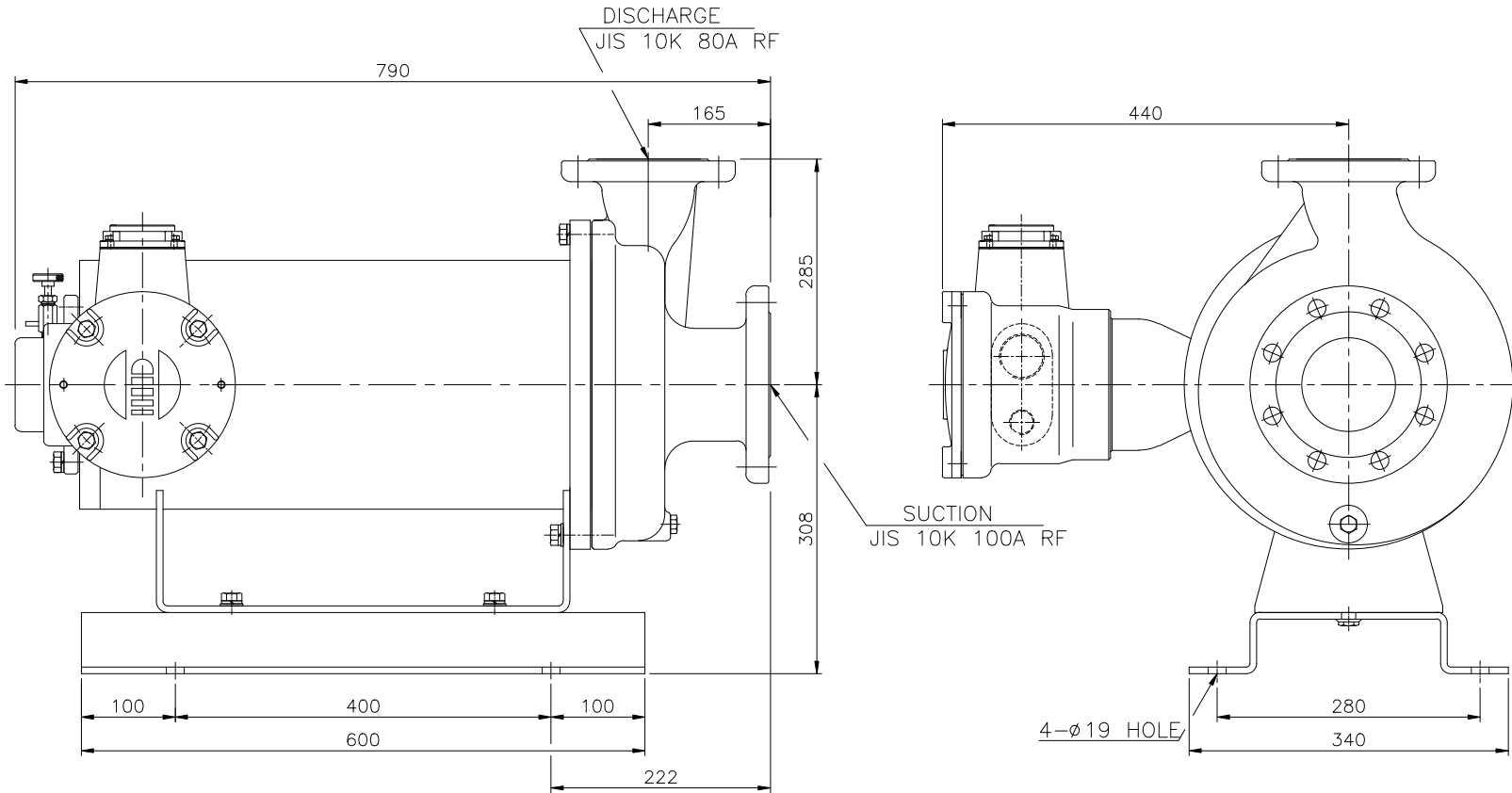



수 정 사 항						
기 호	일 자	내 용	담 당	확 인	승 인	수정근거
①						
②						
③						



PUMP SPECIFICATION				MOTOR SPECIFICATION	
TYPE	EX30C-HB1123-S6	OUTPUT	22 kW		
CAPACITY	60 m ³ /hr	SPEED	2950 rpm		
TOTAL HEAD	52 m	VOLTAGE	380 V		
SUCTION SIZE	100A	PHASE	3 φ		
DISCHARGE SIZE	80A	POLES	2P		
TYPE	-	FREQUENCY	50 Hz		

ITEM NO.	
CUSTOMER	
MODEL	EX30C-HB1123-S6
NONSEAL CANNED MOTOR PUMP OUTLINE DIMENSIONS DRAWING	
 HALLA INDUSTRIAL CO., LTD. PUSAN, KOREA	

FLANGE CODE								<input type="checkbox"/> F.F	<input checked="" type="checkbox"/> R.F
SUCTION(100A)	Ds	Cs	N-H	DISCHARGE(80A)	Ds	Cs	N-H		
JIS 10K	210	175	8-φ19	JIS 10K	185	150	8-φ19		